

Lifta

House #101

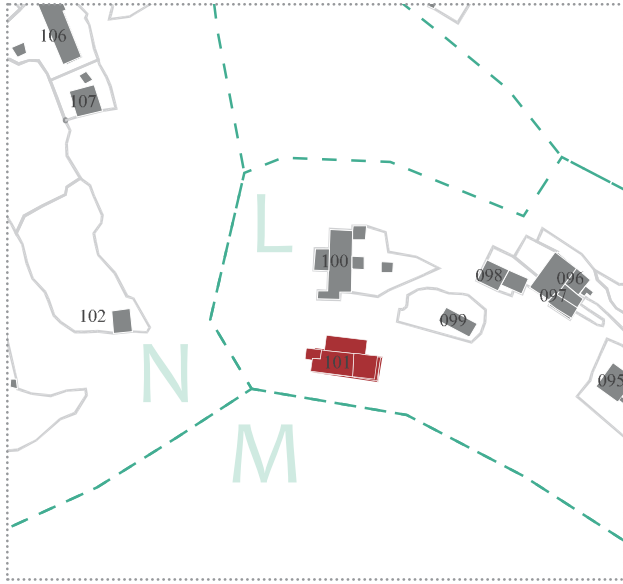
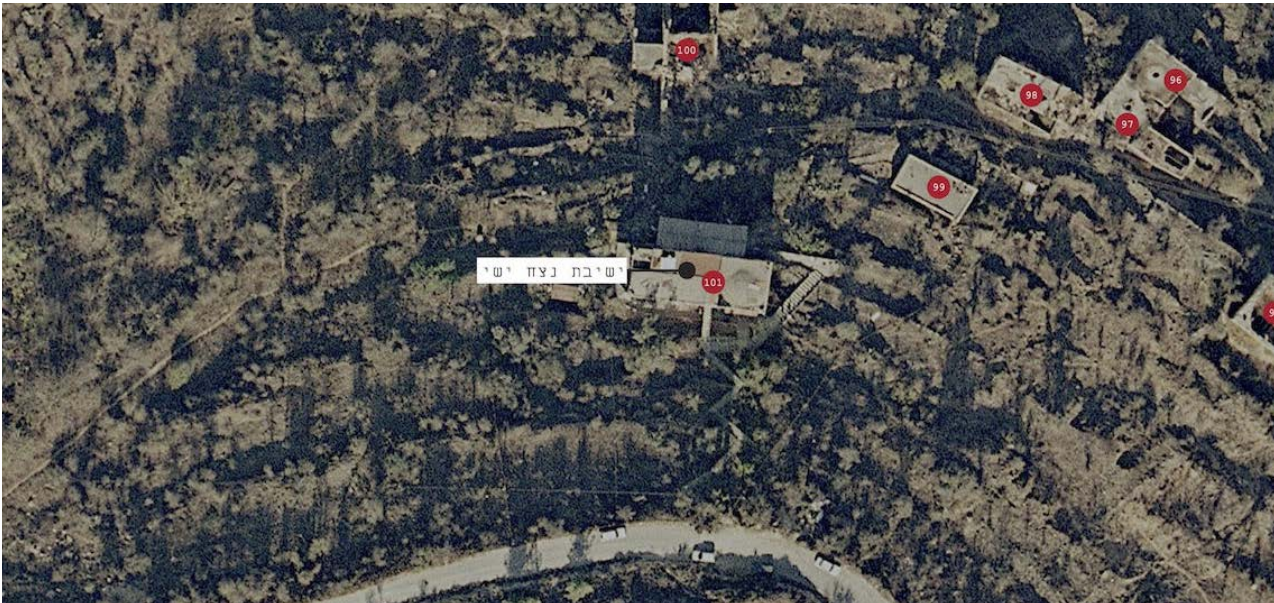


Site Details

General Information

Site Number	101
Coordinates	31°47'40.81"N / 35°11'42.96"E
Address	---
General description	Three story building with a rectangular shape. The building is built into the slope with the lower floor partly underground. Each of the two lower floors consists of three big spaces, both of them built with modern technologies (flat ceilings). The upper floor is a later extension.
Former residents	---
Current residents	'Nezah Yishay', educational center. Used to be an experimental open school.
Building state	Mostly refurbished
Damages	---
Human residue	---

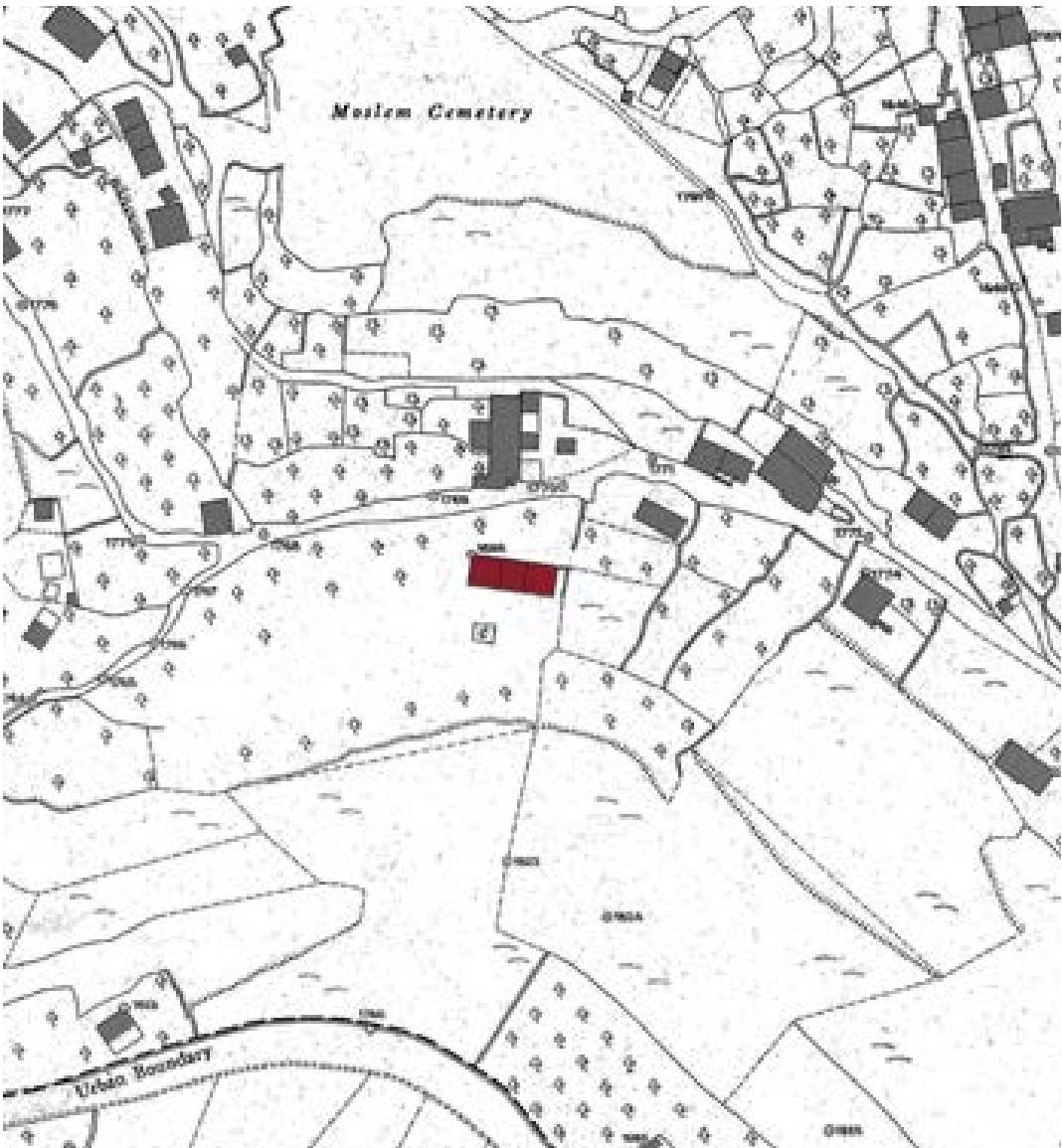
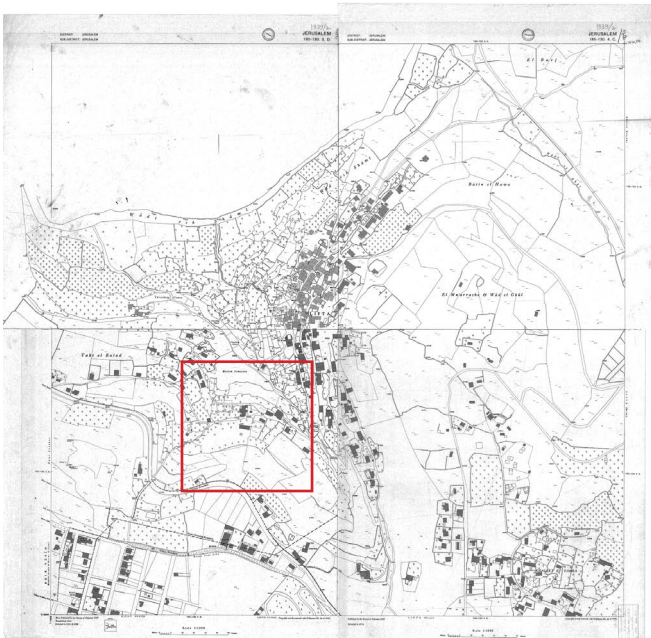
Style / Typology	Modern building techniques in arab style
Special Characteristics	---
Damages	---
Notes	---



Historical Maps

Mandatory Period

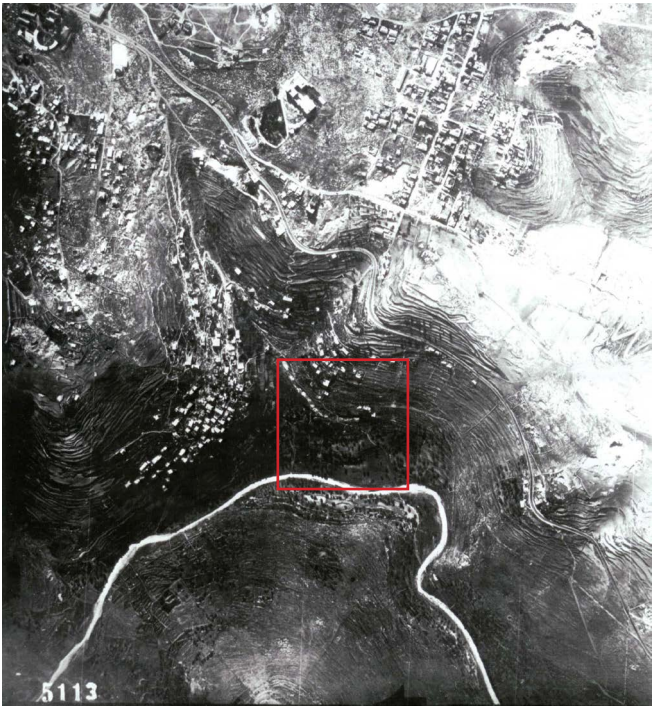
Year	1937, updated 1944
Source	British survey of Palestine
Scale	1:1250



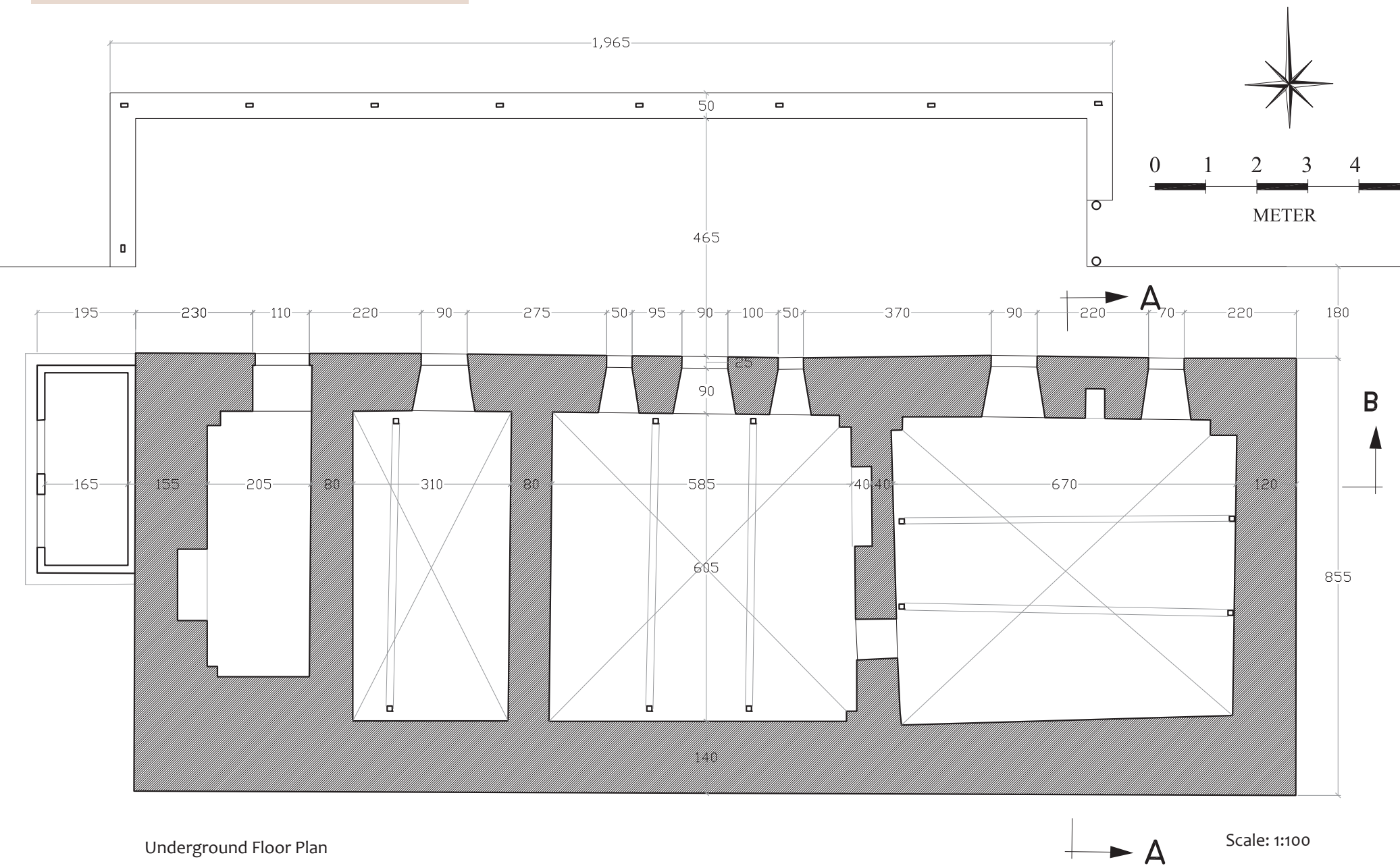
Historical Aerials

Mandatory Period

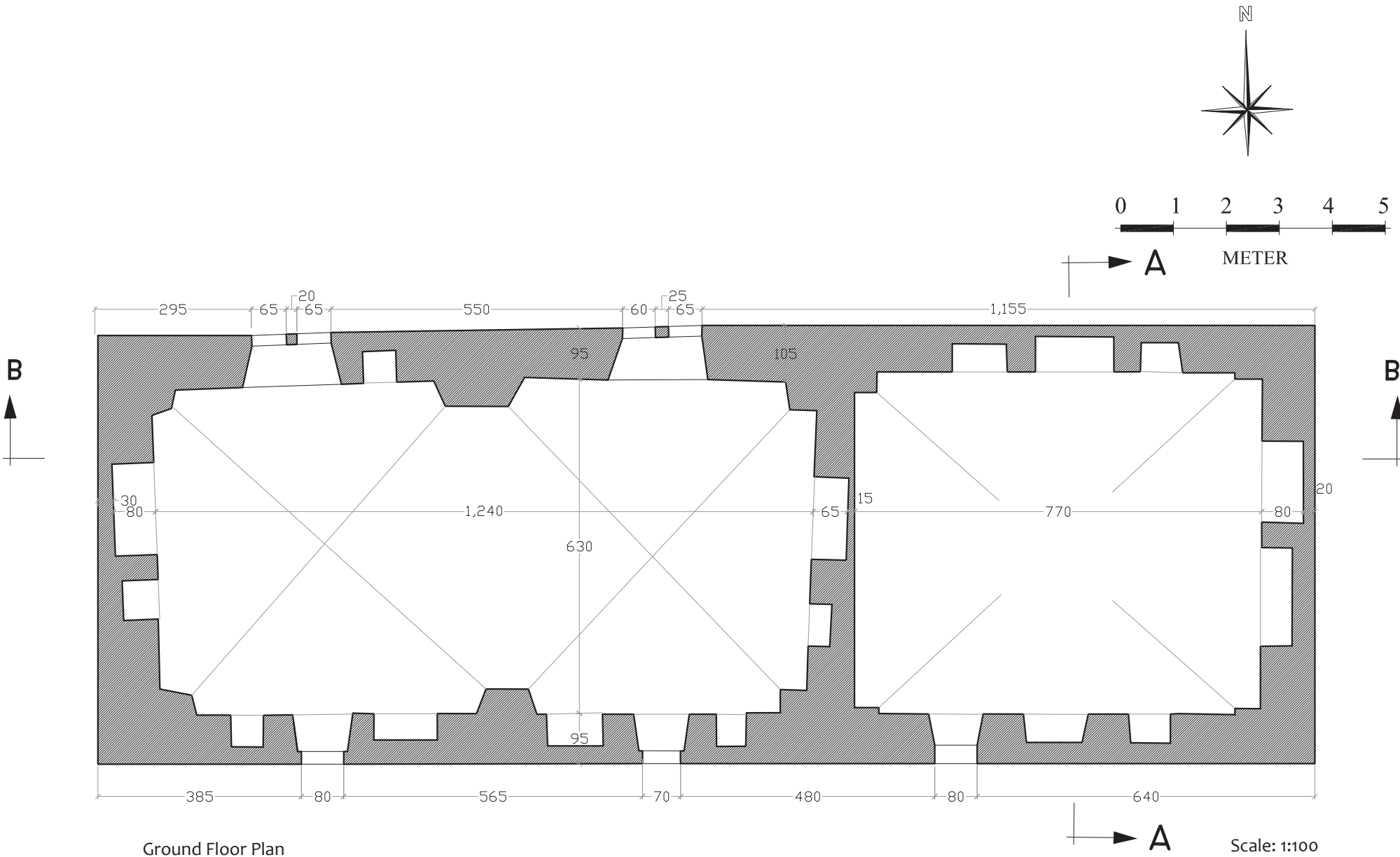
Year	---
Source	---
Description	---



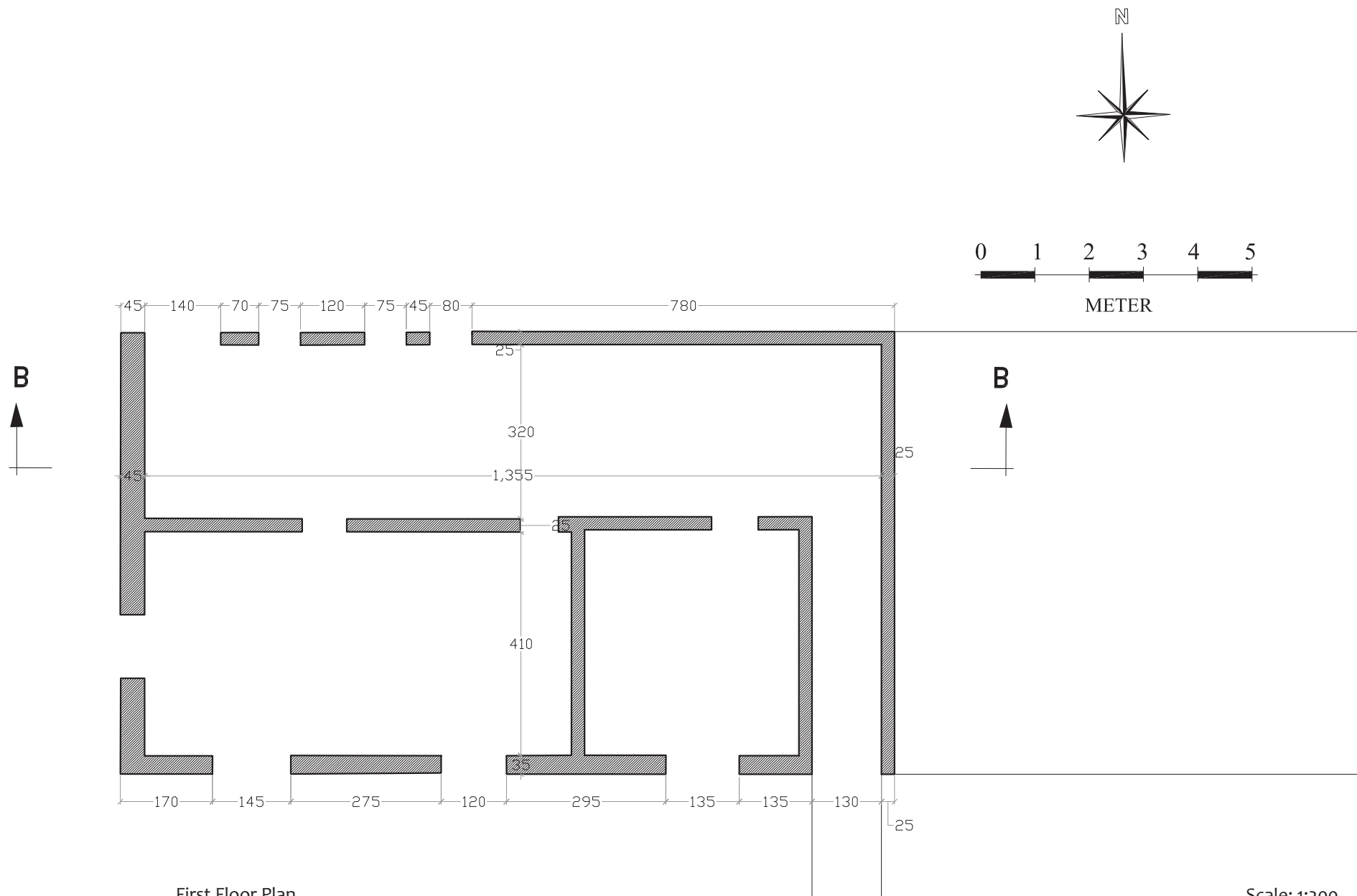
Plans



Plans



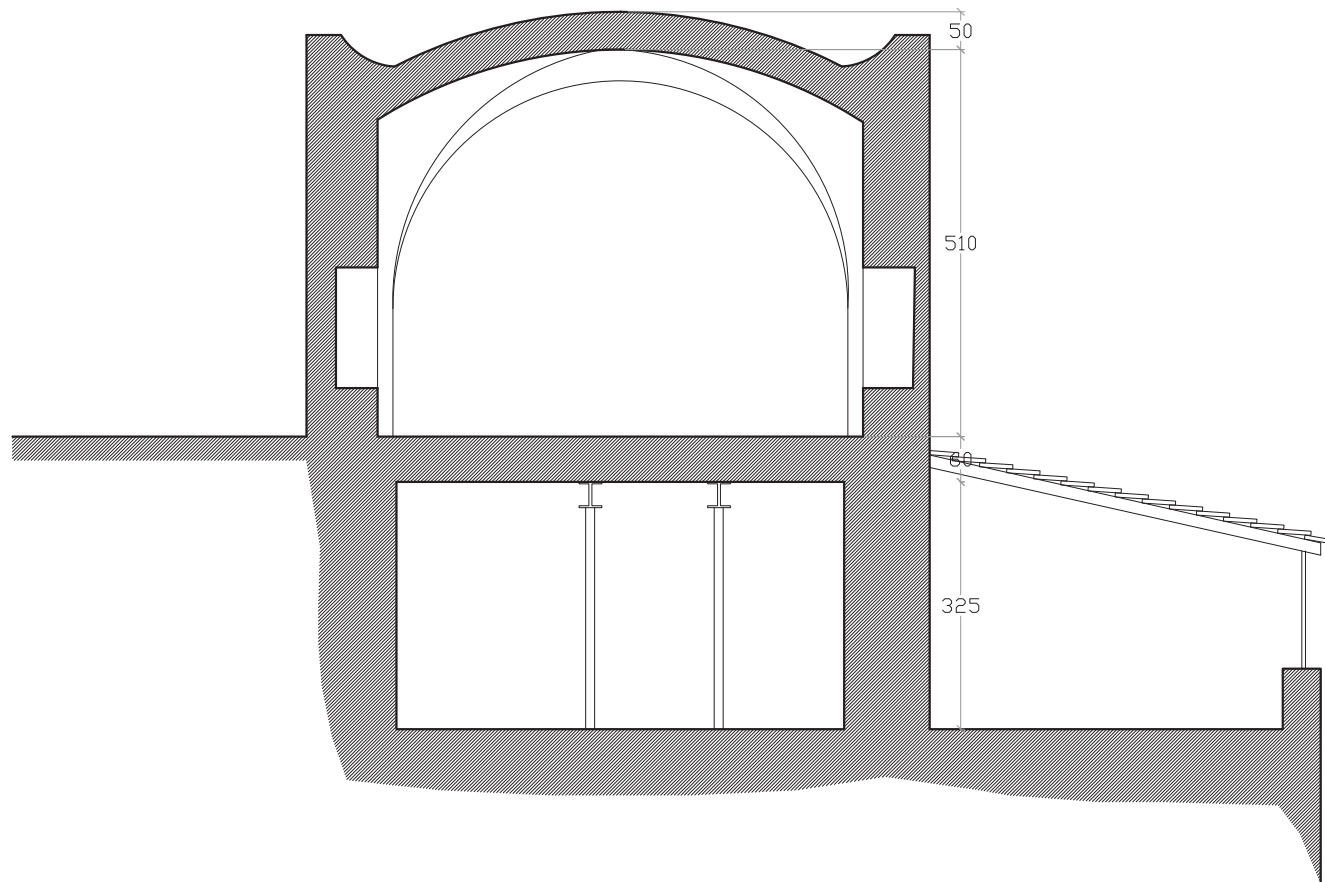
Plans



First Floor Plan

Scale: 1:200

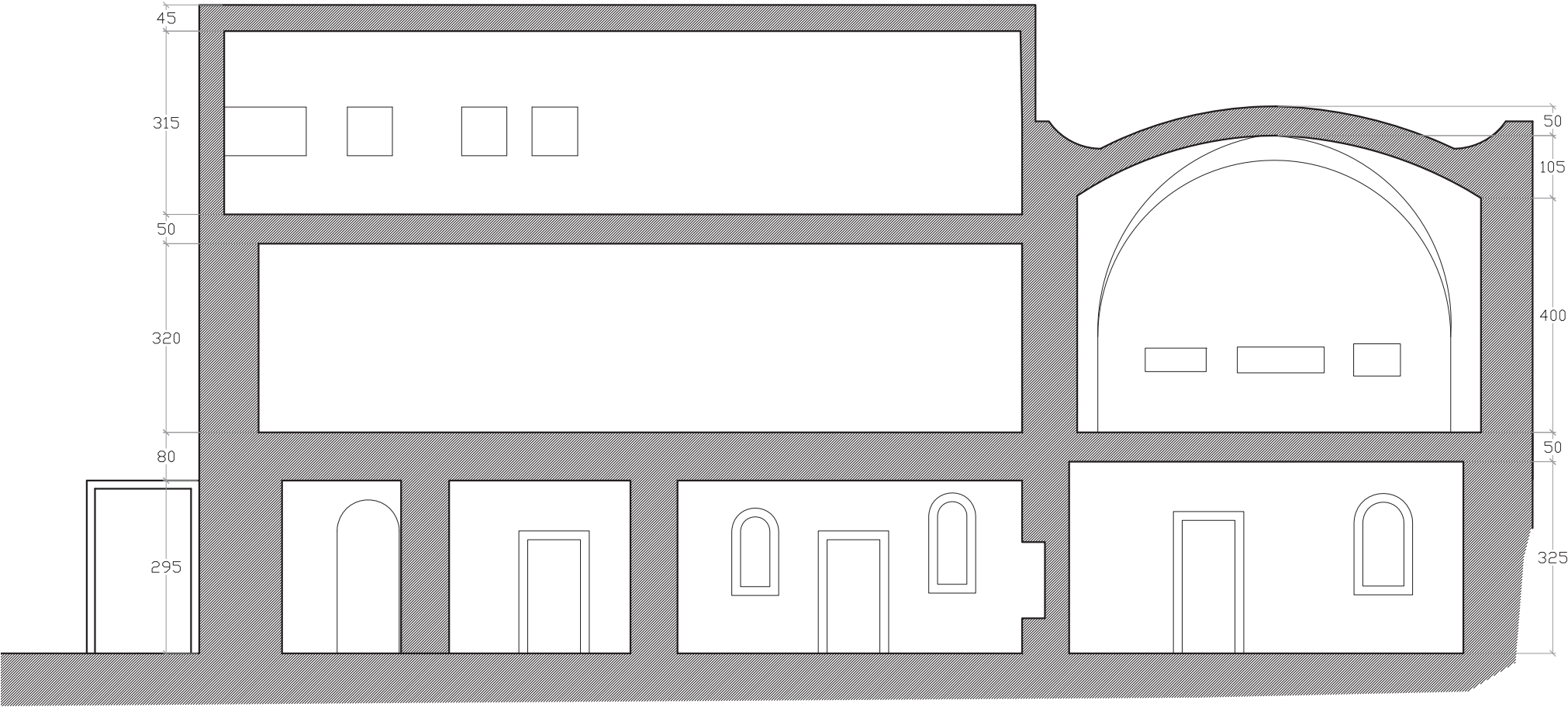
Sections



Section A-A

Scale: 1:100

Sections



Section B-B

Scale: 1:100

Photos



Eastern Facade

Photo: Sivan Abargil

Photos



Eastern Facade

Photo: Sivan Abargil