

Lifta

House #121

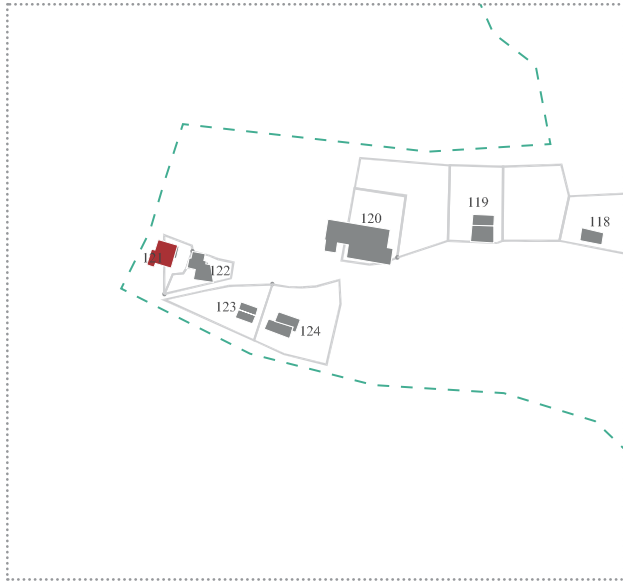


Site Details

General Information

Site Number	121
Coordinates	31°47'43.7"N 35°11'25.4"E
Address	Shderot Ben Gurion 118, Jerusalem
General description	We were unable to make a complete description due to dogs guarding the path to the house. Seems like a two story house, mostly built before 1948, with extentions at the second floor. The house is built into the slope on it's southern side.
Former residents	---
Current residents	---
Building state	Good state (as seen from a distance)
Damages	---
Human residue	---

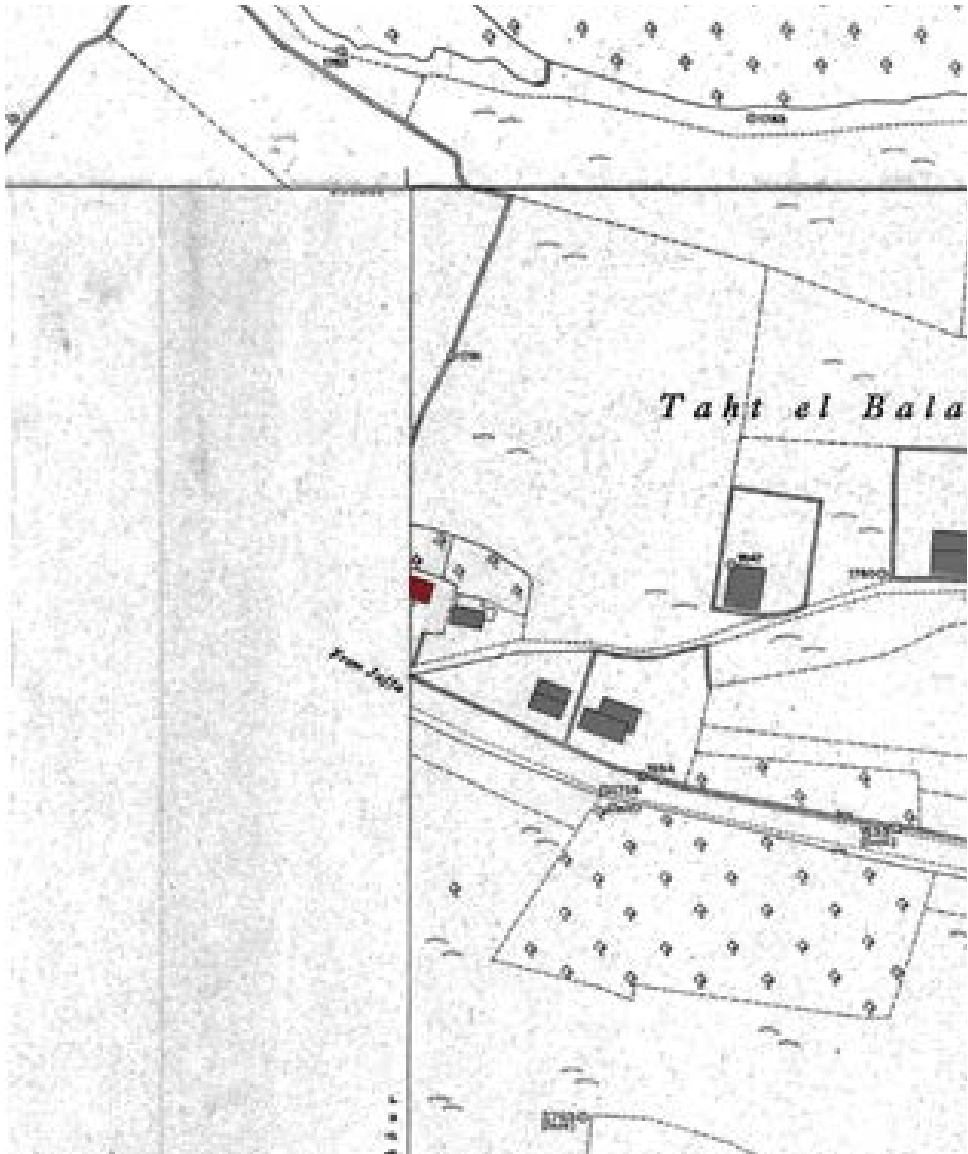
Style / Typology	Modern building with arab style with later extensions
Special Characteristics	---
Damages	---
Notes	Information based on observation from outside only



Historical Maps

Mandatory Period

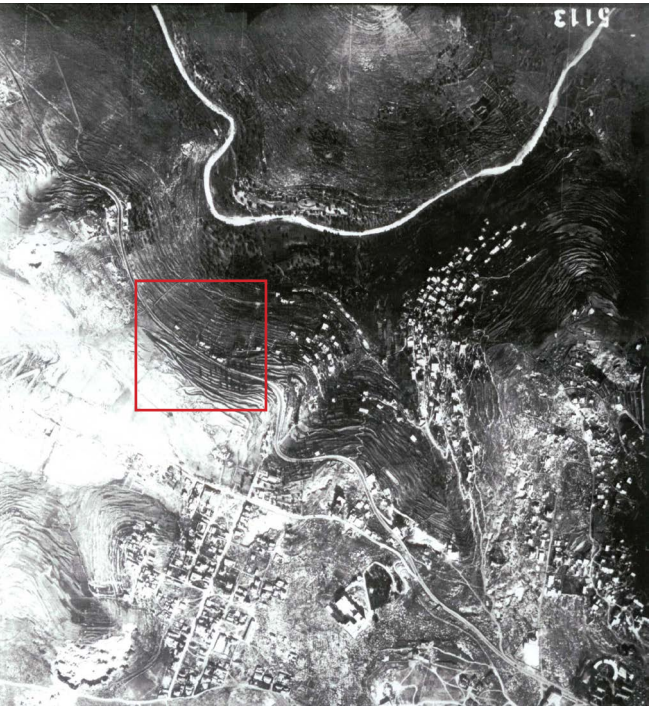
Year	1937, updated 1944
Source	British survey of Palestine
Scale	1:1250



Historical Aerials

Mandatory Period	
------------------	--

Year	---
Source	---
Description	---



Photos



View from the east
Photo: Tai Pinchevsky



North-West Facade
Photo: Tai Pinchevsky

Photos



View from the south

Photo: Tai Pinchevsky