

# Lifta

House #124

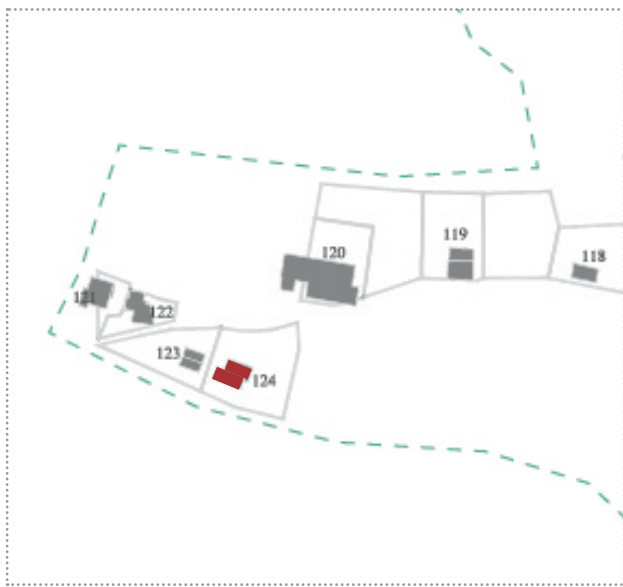
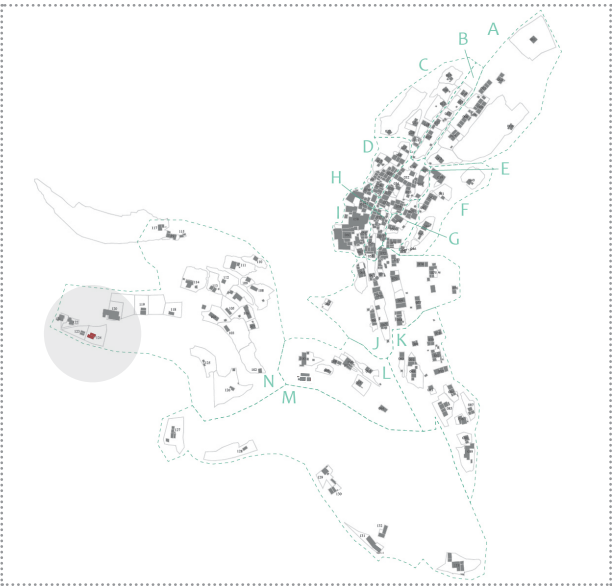
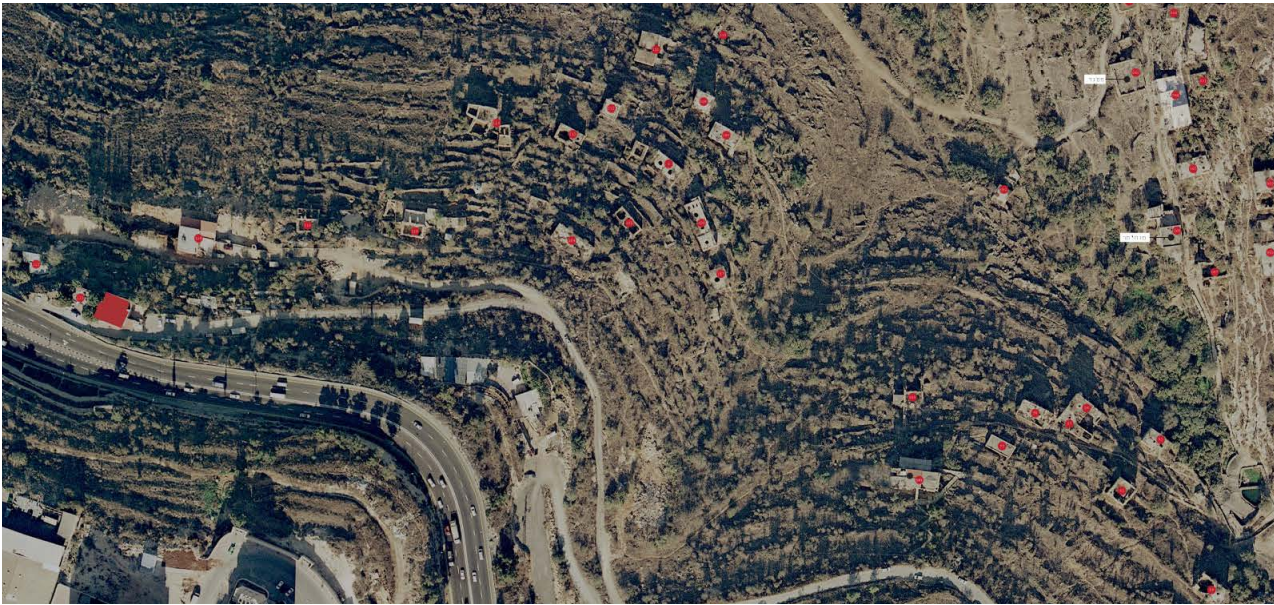


# Site Details

## General Information

Site Number	124
Coordinates	31.795429 N / 35.190663 E
Address	---
General description	A two story long building built into the slope. The old part of the house was L shaped at it's section which created a balcony over the second floor. The balcony was closed later with curtain walls.
Former residents	---
Current residents	Yoni Yochanan
Building state	Maintained in good condition
Damages	---
Human residue	---

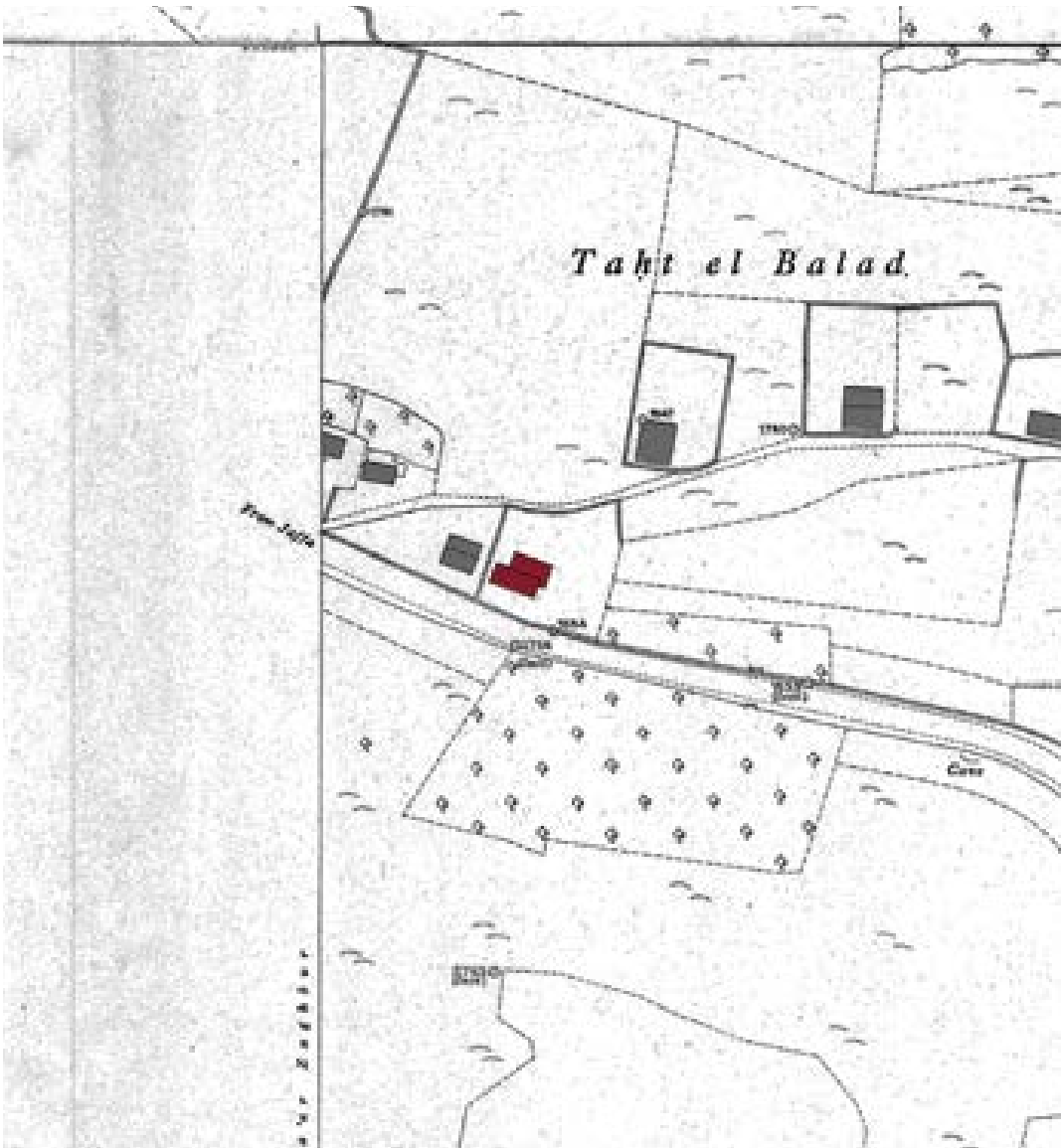
Style / Typology	Traditional style with modern extensions
Special Characteristics	---
Damages	---
Notes	Information based on observation from outside only



# Historical Maps

## Mandatory Period

Year	1937, updated 1944
Source	British survey of Palestine
Scale	1:1250

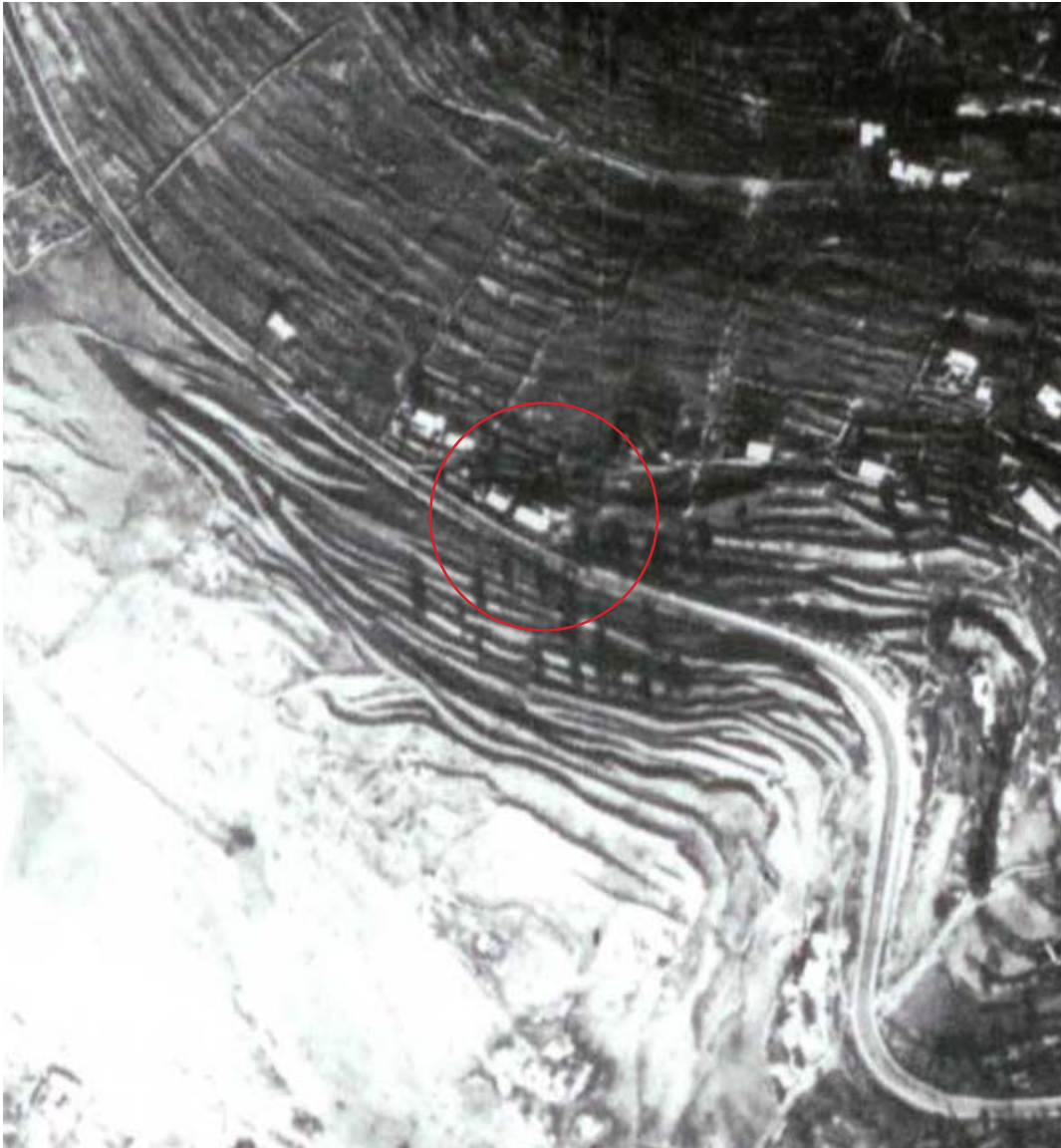
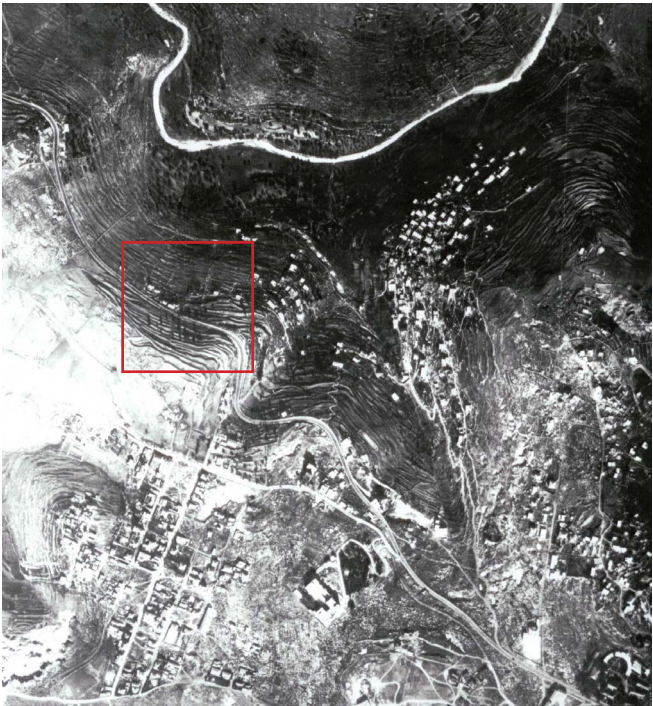




# Historical Aerials

Mandatory Period	
------------------	--

Year	---
Source	---
Description	---





# Photos



Southern Facade  
Photo: Tai Pinchevsky



Northern Facade  
Photo: Tai Pinchevsky



## Photos



Eastern Facade

Photo: Tai Pinchevsky