

Lifta

The Customs House
House #131



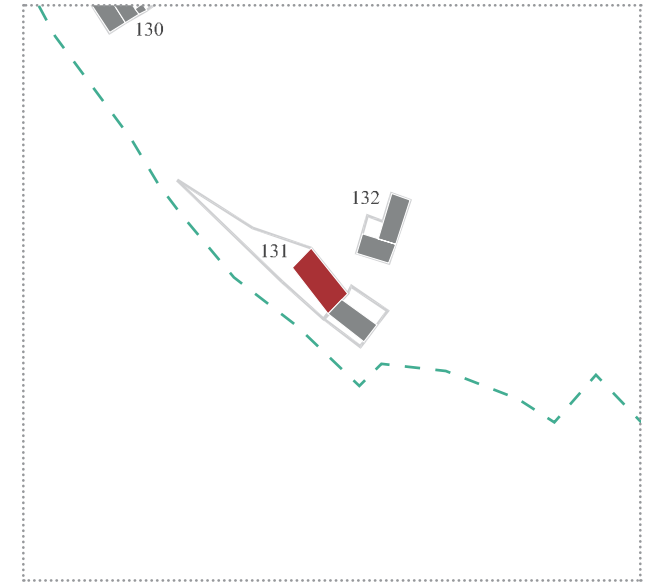
Site Details

General Information

Site Number	131
Coordinates	31°47'31.26"N / 35°11'45.80"E
Address	Shderot Ben Gurion 125
General description	A three story building positioned on the main road from Jerusalem to Jaffa. Main entrance is from the second floor.
Former residents	---
Current residents	---
Building state	Good Condition. Building is covered with commercial posters.
Damages	---
Human residue	---



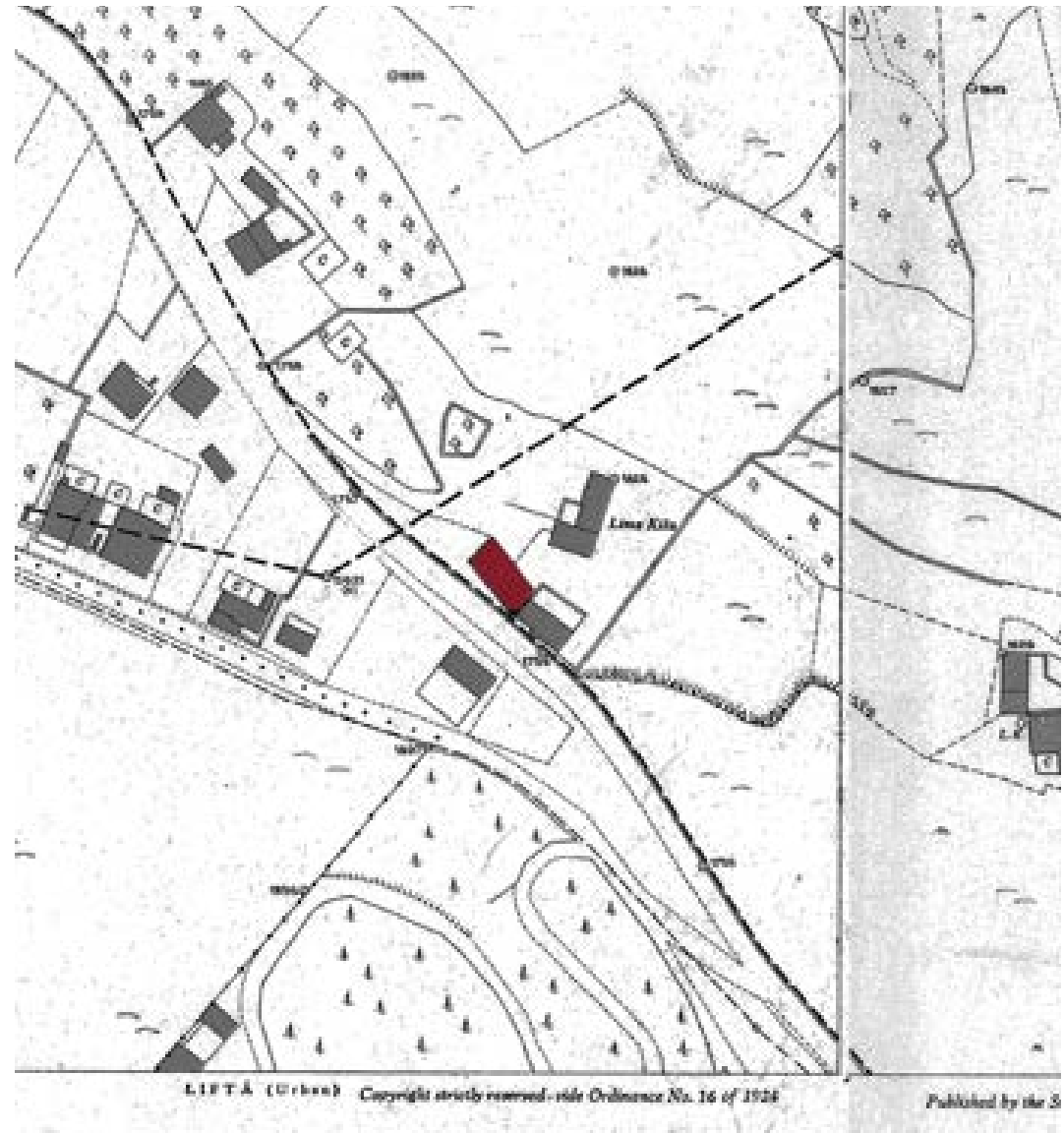
Style / Typology	Modern building techniques. Flat roof, and concrete walls with stone facade.
Special Characteristics	A few shop-styled openings on the second floor, turning to the main road, that's been blocked.
Damages	---
Notes	---



Historical Maps

Mandatory Period

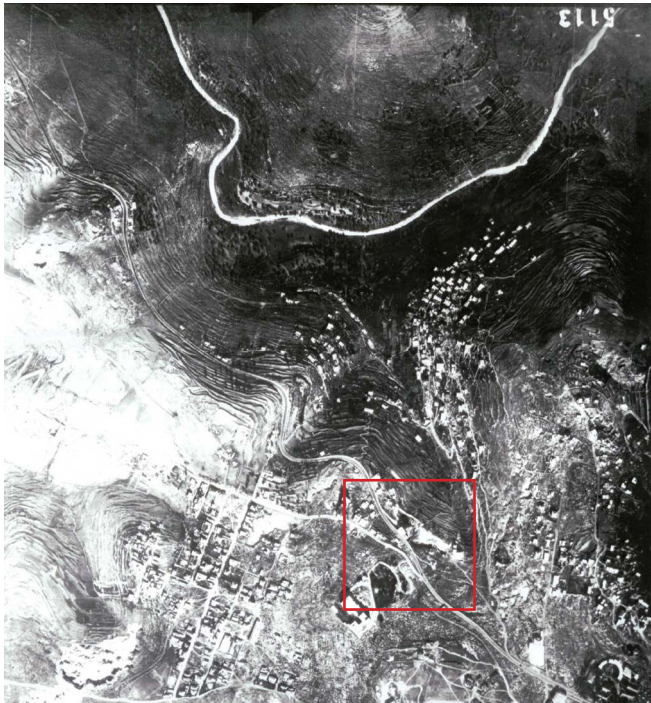
Year	1937, updated 1944
Source	British survey of Palestine
Scale	1:1250



Historical Aerials

Mandatory Period

Year	---
Source	---
Description	---



Photos



Western Facade
Photo: Tai Pinchevsky



Eastern & Northern Facade
Photo: Tai Pinchevsky

Photos



Northern Facade
Photo: Tai Pinchevsky

Photos



Southern Facade
Photo: Tai Pinchevsky

Photos



Openings on Southern Facade

Photo: Tai Pinchevsky

Photos



Detail on Main Entrance at the Southern Facade

Photo: Tai Pinchevsky