

Lifta

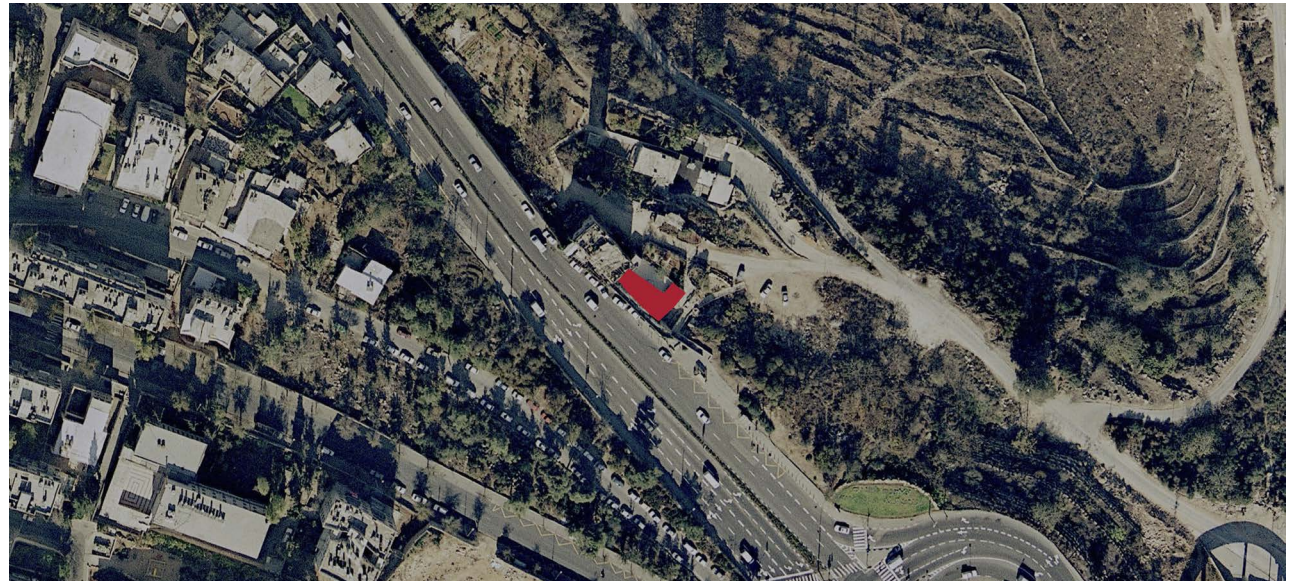
House #131.1



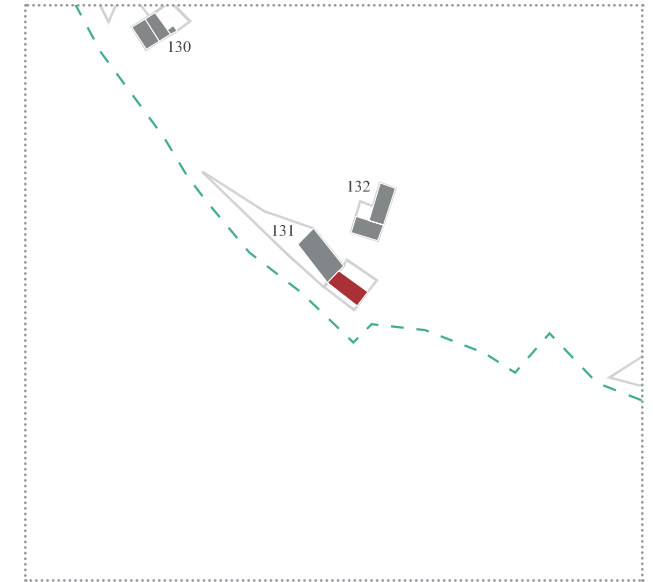
Site Details

General Information

Site Number	131.1
Coordinates	31°47'30.8"N 35°11'46.4"E
Address	Shderot Ben Gurion 127, Jerusalem
General description	A one story building, surrounding a courtyard from 3 sides (open to the north-east). The house is just below the main road, on the south-west, and partly built into the ground.
Former residents	---
Current residents	Residents have apparently left due to compensation agreement
Building state	Mediocre conditions
Damages	---
Human residue	---



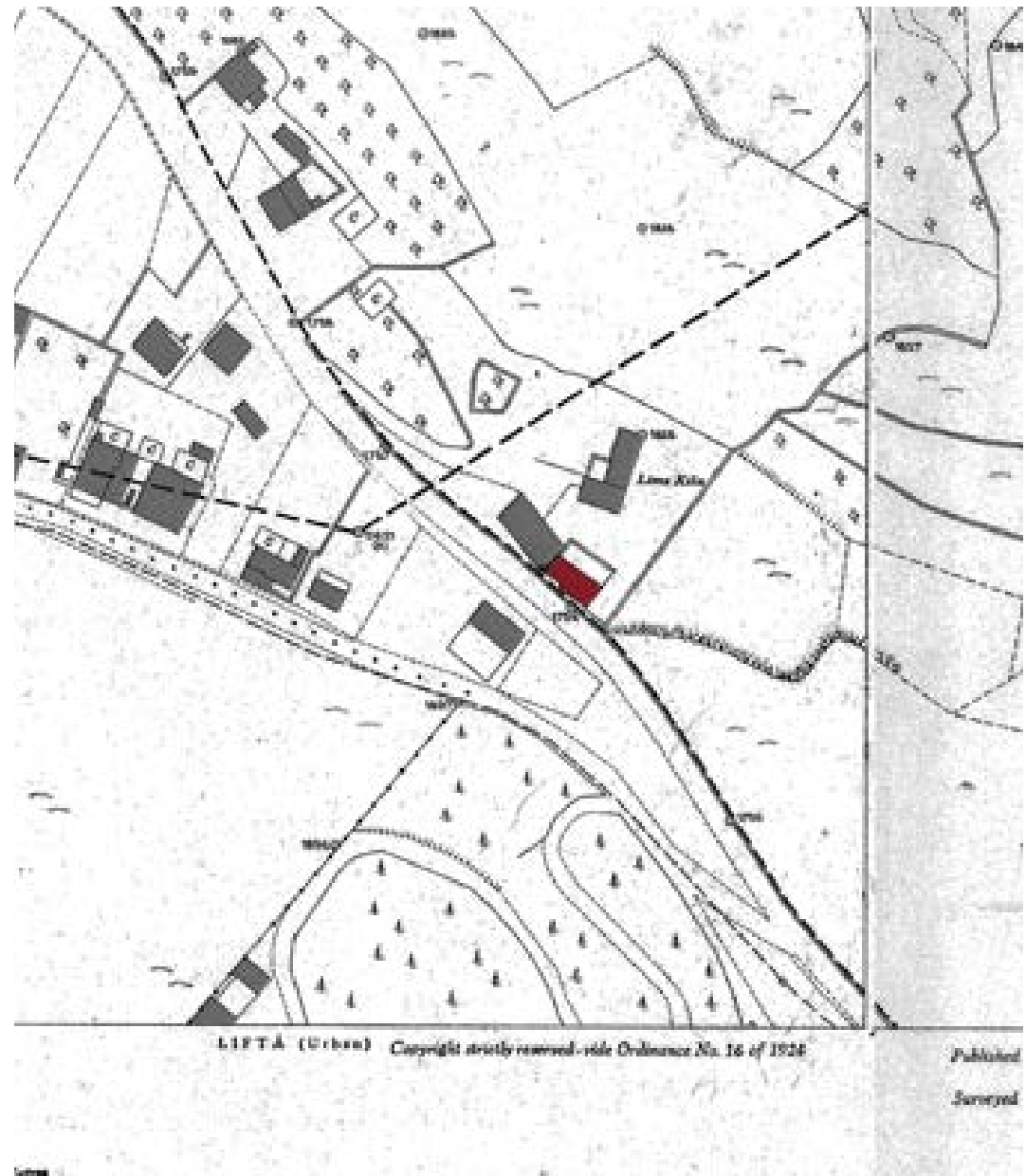
Style / Typology	---
Special Characteristics	---
Damages	---
Notes	---



Historical Maps

Mandatory Period

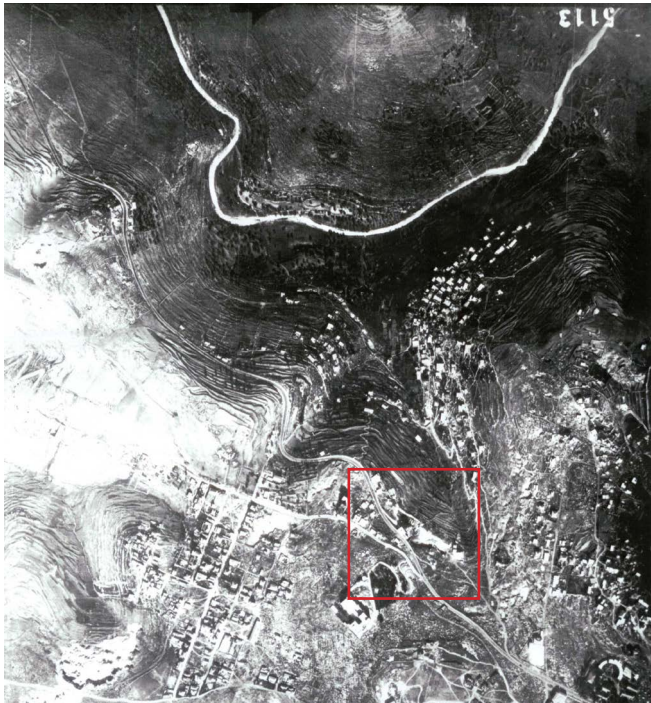
Year	1937, updated 1944
Source	British survey of Palestine
Scale	1:1250



Historical Aerials

Mandatory Period

Year	???
Source	---
Description	---



Photos



Eastern & Northern Facade

Photo: Tai Pinchevsky

Photos



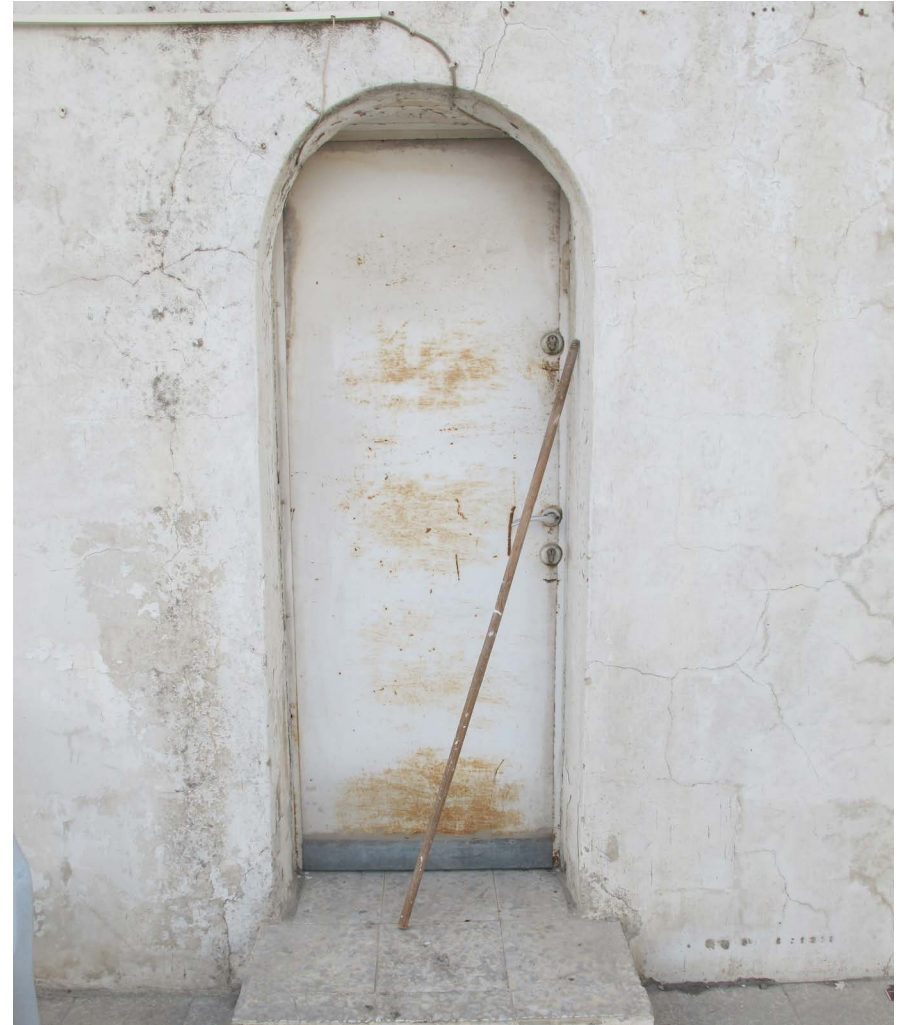
Inner Western Facade

Photo: Hadar Porat

Photos

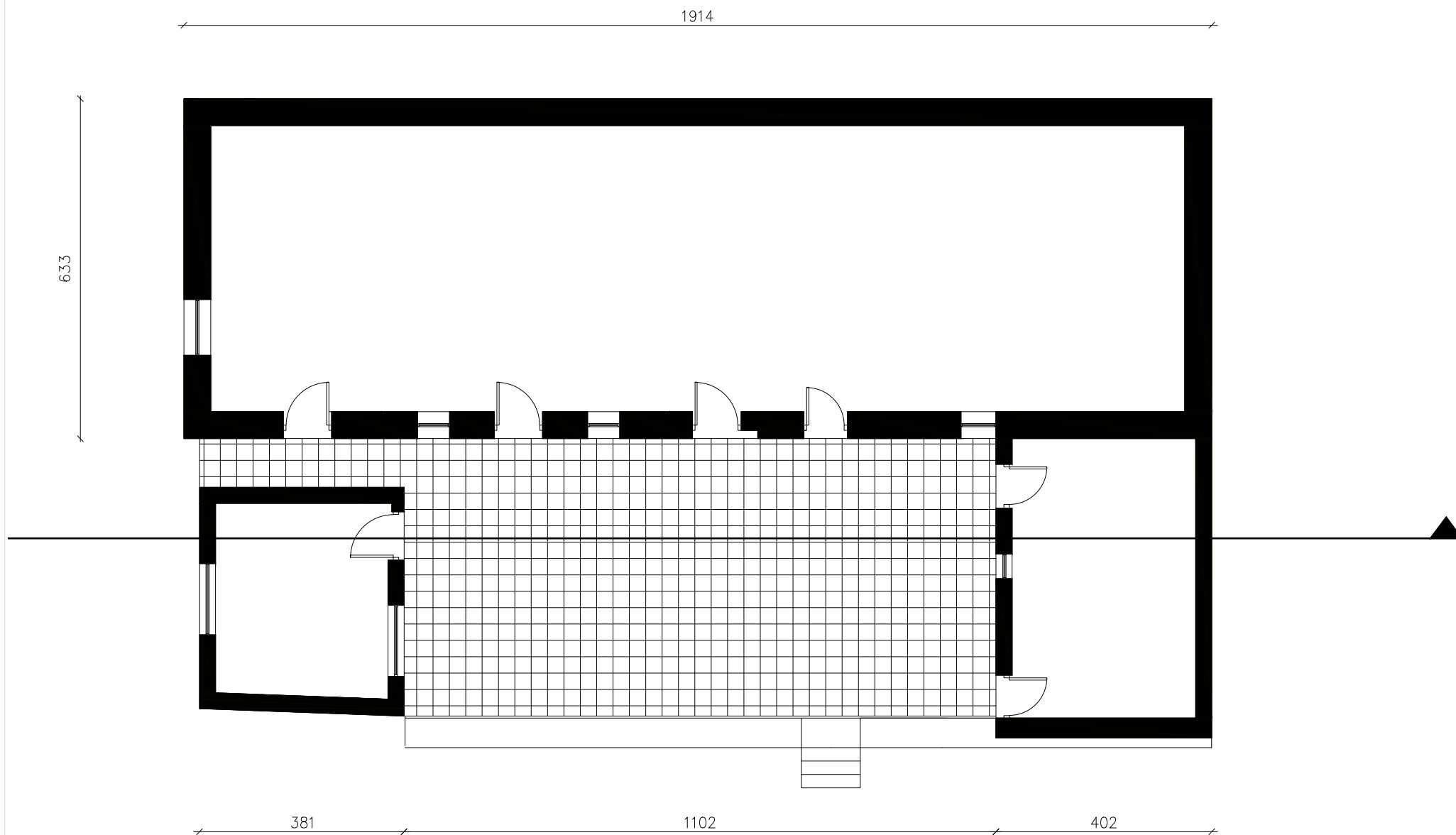


Detail Facade
Photo:Hadar Porat



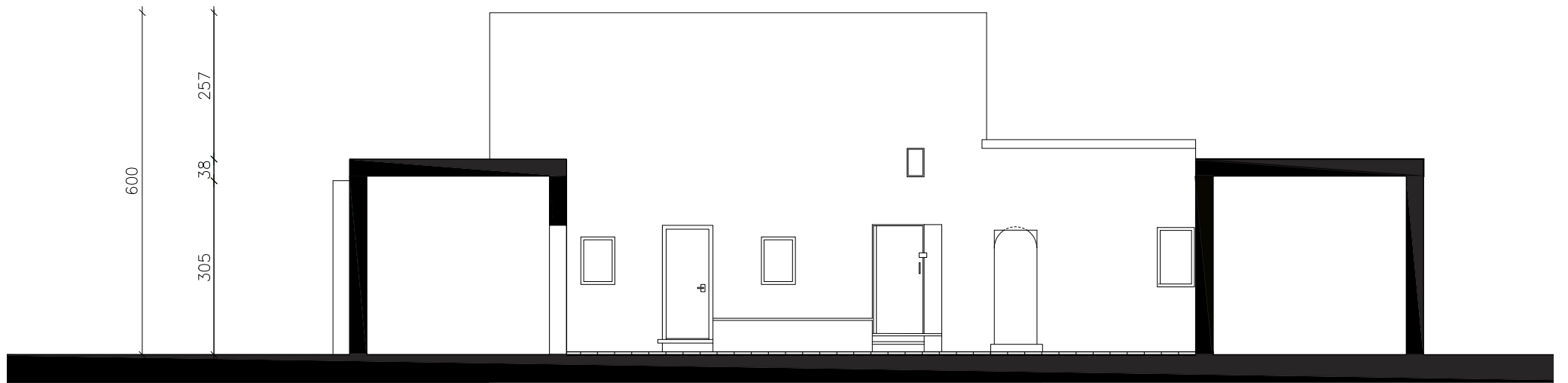
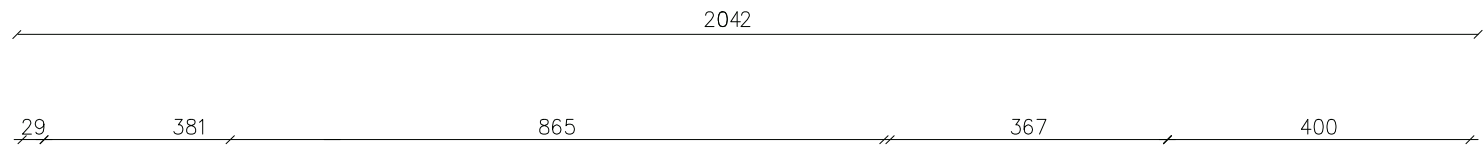
Detail Facade
Photo:Hadar Porat

Plans



Scale: 1:100

Plans



Scale: 1:100